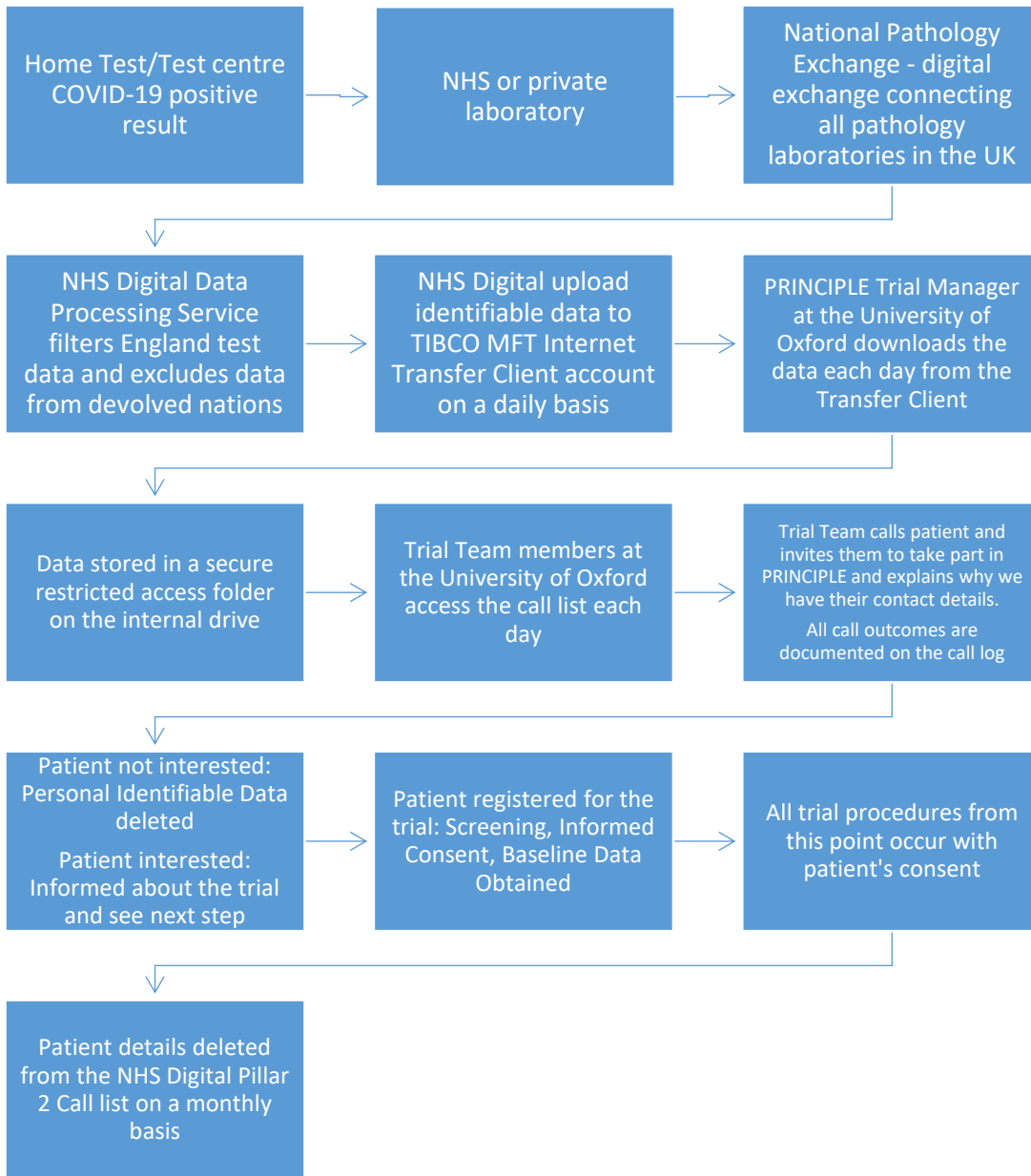


# 1. Data Flow: Transfer of Personal Identifiable Pillar 2 Data from NHS Digital to PRINCIPLE trial team at Oxford University



2. Data Flow from Cake et al, 'Development and evaluation of rapid data-enabled access to routine clinical information to enhance early recruitment to the national clinical platform trial of COVID-19 community treatments' (2021). : <https://doi.org/10.1101/2021.01.15.21249724>

Figure 2: Overview Process Diagram for test data route to the clinical trial

